



LUXURIOUS ELEGANT CLUSTER

SOLD OUT

L I M E
S T O N E

6 GERHARD

6 GERHARD STREET, SANDOWN

4 4.5 3

FROM R8.2 MILLION
NO TRANSFER DUTY INCL. VAT

Visit our website www.limestone.co.za



OPULENT LIVING

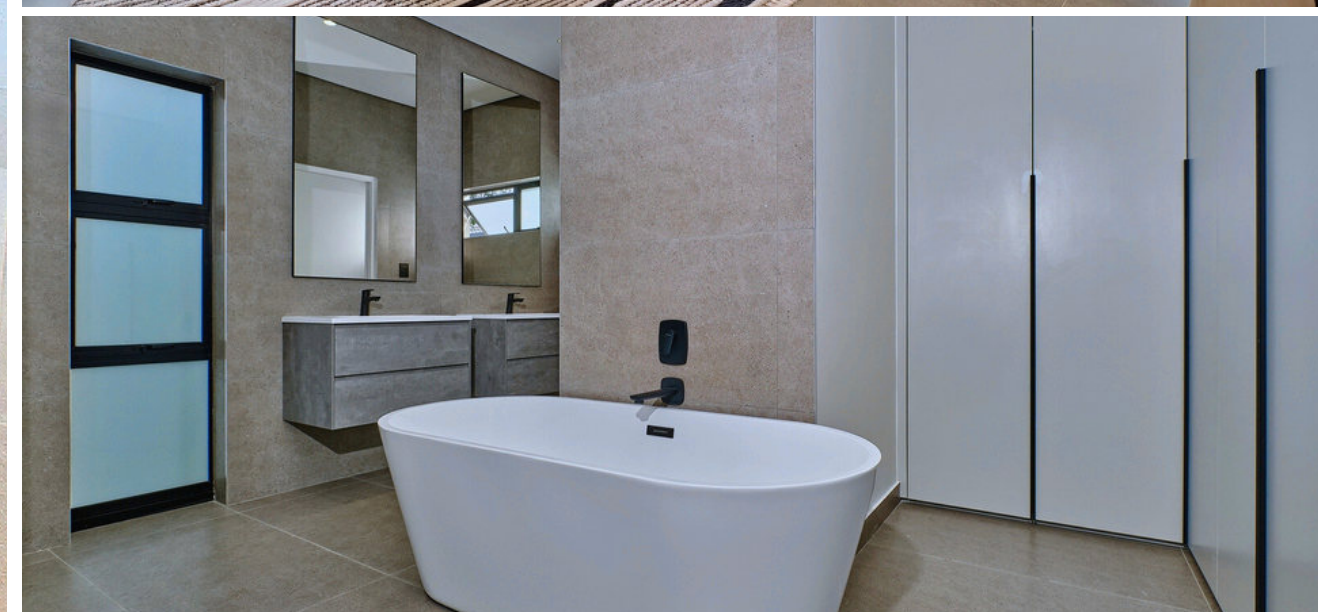
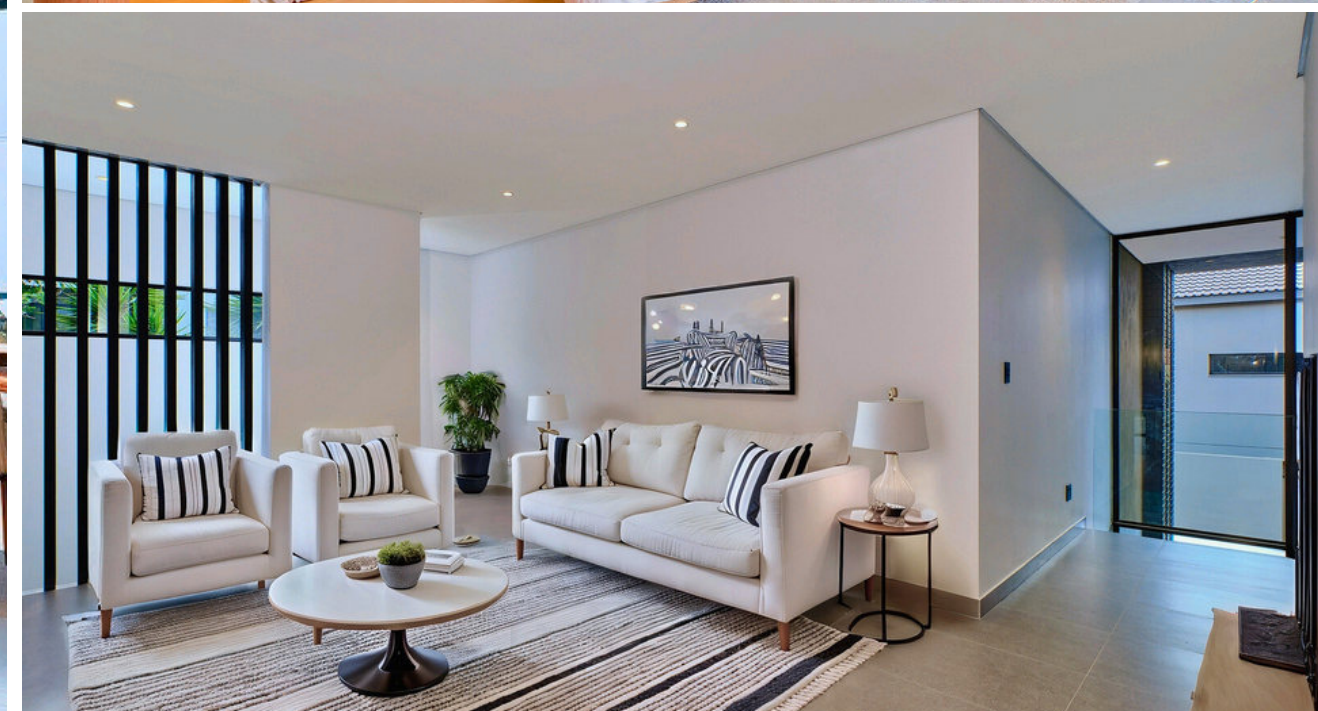
Discover the epitome of modern luxury living at Sandown's newest 4-bedroom cluster development. Nestled in the heart of one of Sandton's most coveted neighborhoods, this exclusive enclave combines contemporary design with the tranquility of a secure, gated community.

With prices starting from only R8 200 000.00
(No Transfer Duty, incl. VAT)

Camera ready
Solar & Inverter

Each meticulously crafted cluster home offers spacious interiors flooded with natural light, showcasing sleek finishes and high-end appliances throughout. The open-plan living areas flow seamlessly onto private outdoor terraces and tantalizing pools, perfect for entertaining or enjoying moments of quiet relaxation.

Whether you are seeking a sophisticated urban retreat or a family friendly sanctuary, this development promises to redefine luxury living in Sandown, setting a new standard for discerning homeowners.



EXCLUSIVE ADDRESS IN JOHANNESBURG



Morning View
Shopping Centre
0.51 km



Sandton city
3.8 km



Morningside
Mediclinic-ER
1.9 km



Sandown High
School
2.1 km



Little 5
Sandton
0.18 km



BP Grayston
Drive
1.06 km

