

LUXURIOUS ELEGANT CLUSTER

SOLD OUT!

2

WESTBOURNE

FROM R 6 250 000 NO TRANSFER DUTY INCL. VAT



www.limestone.co.za +27 78 509 8334

4 4.5 2

2 WESTBOURNE ROAD, BRYANSTON



OPULENT LIVING

2 Westbourne road, Bryanston

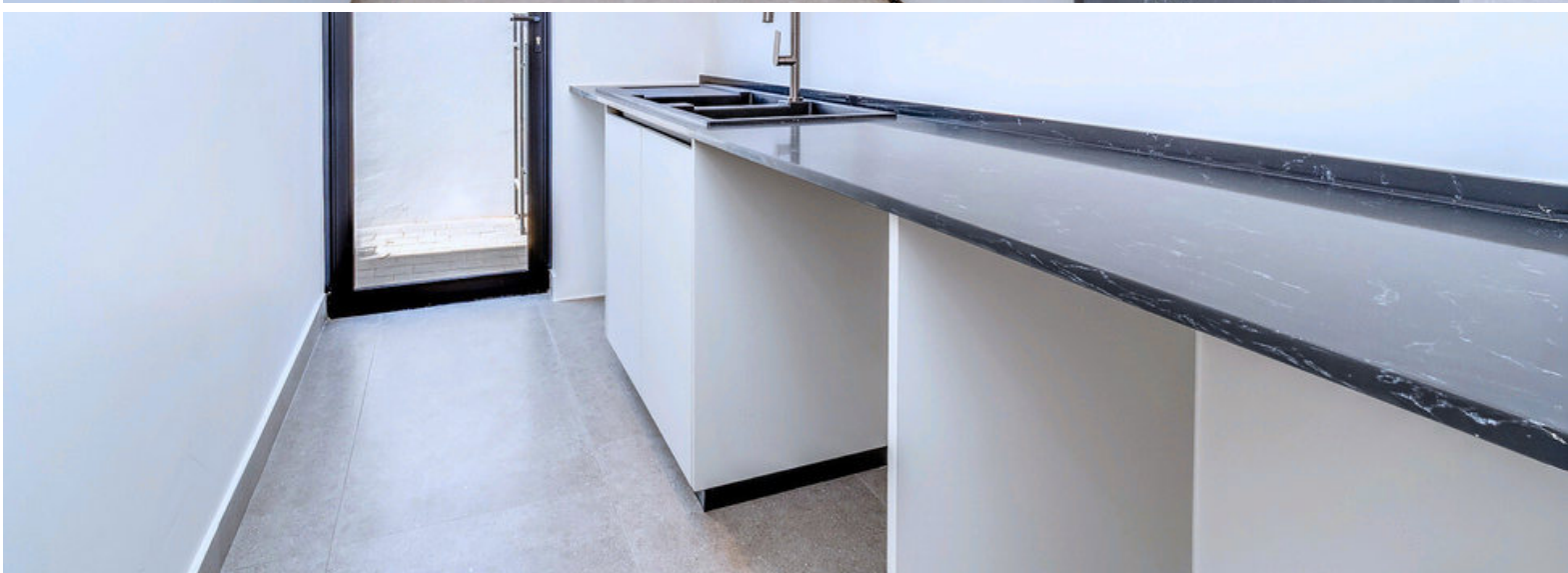
Discover the epitome of tropical, modern luxury living at Westbourne's newest 4-bedroom cluster development. 10 Units Nestled in the heart of one of Sandton's most coveted neighborhoods, this contemporary design with the tranquility of a secure, gated community.

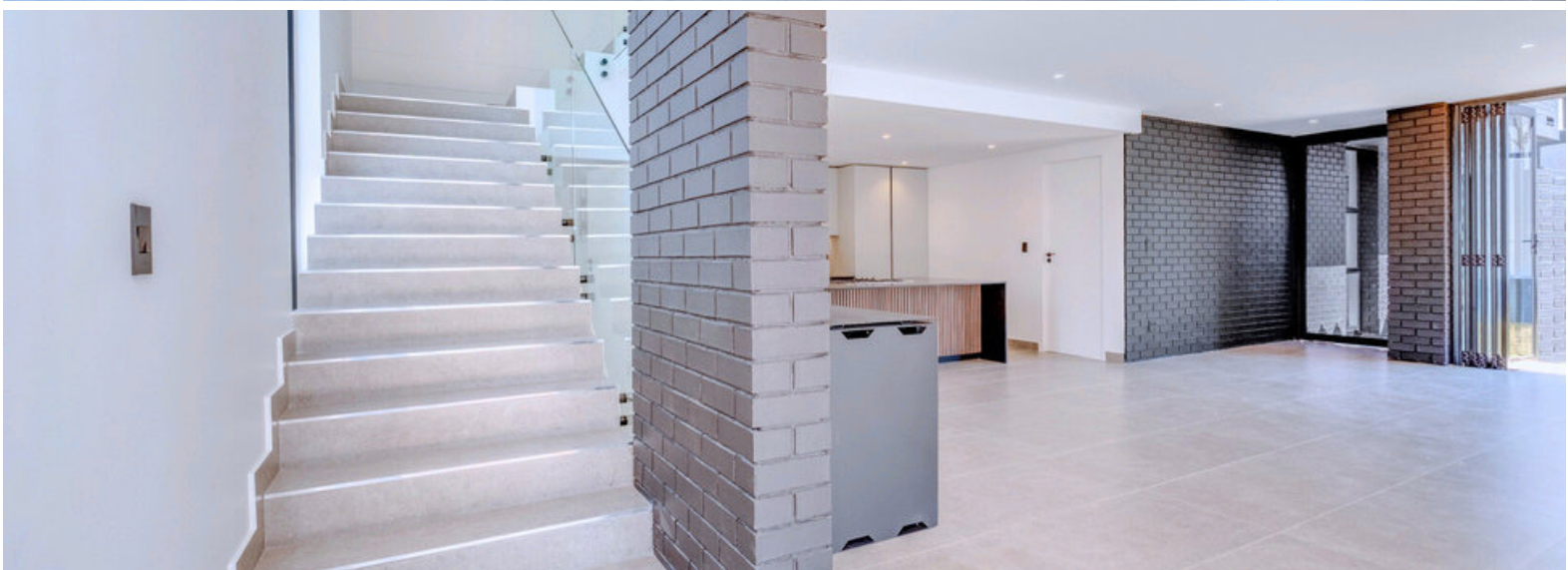
With prices starting from only R6 250 000
(No Transfer Duty, incl. VAT)

Back Up Power and water, Solar + Inverter.

Each of these stunning clusters have been meticulously planned and designed to make the best of the surrounding mood and utilize uplifting light. Modern colour palettes and clean lines flirt with your eye and showcase a truly unique and well rounded development.

Whether you are seeking a sophisticated urban retreat or a family-friendly sanctuary, this development promises to redefine luxury living in Bryanston, setting a new standard for discerning homeowners. Bryanston is an upper-class residential suburb of Johannesburg











2 WESTBOURNE ROAD